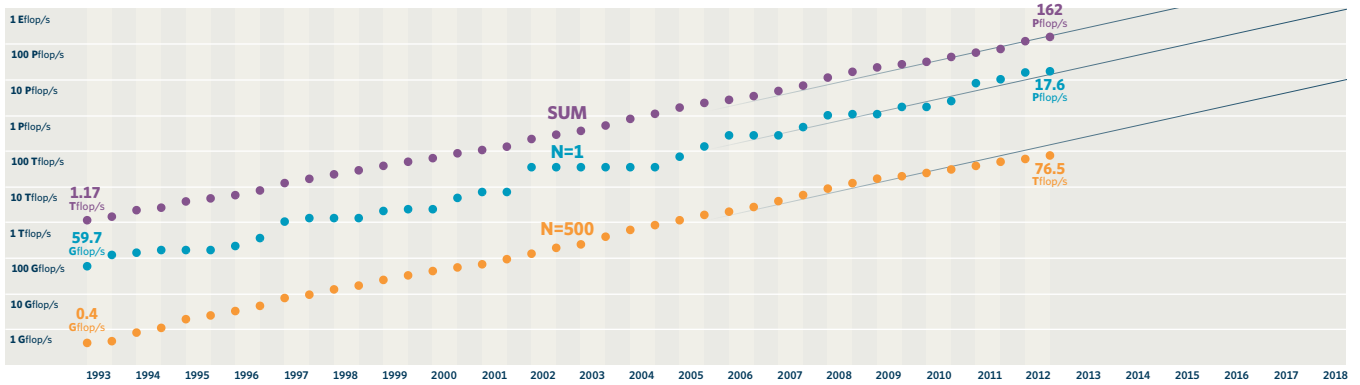


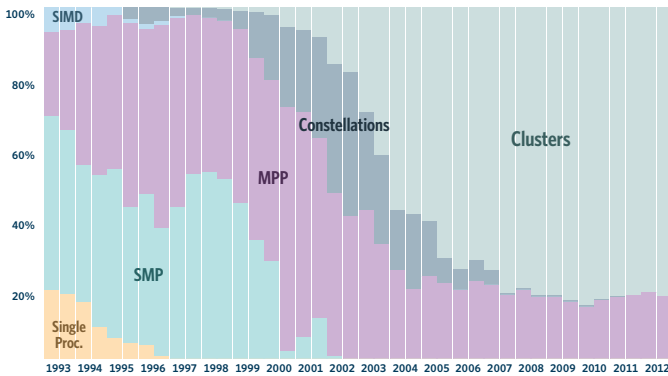
	NAME	SPECS	SITE	COUNTRY	CORES	R _{MAX} PFLOP/S	POWER MW
1	TITAN	Cray XK7, Opteron 6274 16C 2.2 GHz + Nvidia Kepler GPU, Custom interconnect	DOE/OS/ORNL	USA	560,640	17.6	8.3
2	SEQUOIA	IBM BlueGene/Q, Power BQC 16C 1.60 GHz, Custom interconnect	DOE/NNSA/LLNL	USA	1,572,864	16.3	7.9
3	K COMPUTER	Fujitsu SPARC64 VIIIfx 2.0GHz, Custom interconnect	RIKEN AICS	Japan	705,024	10.5	12.7
4	MIRA	IBM BlueGene/Q, Power BQC 16C 1.60 GHz, Custom interconnect	DOE/OS/ANL	USA	786,432	8.16	3.95
5	JUQUEEN	IBM BlueGene/Q, Power BQC 16C 1.60 GHz, Custom interconnect	Forschungszentrum Jülich	Germany	393,216	4.14	1.97

PERFORMANCE DEVELOPMENT

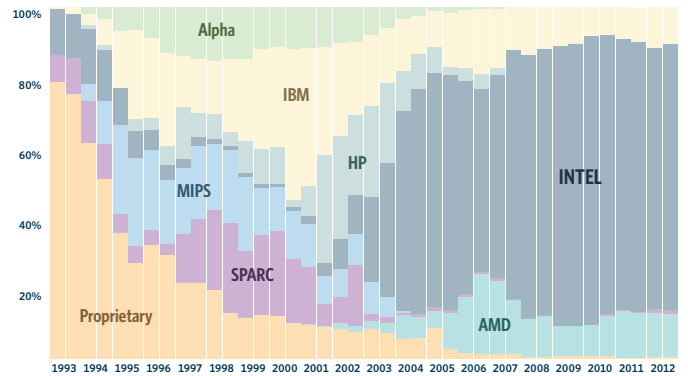


PROJECTED

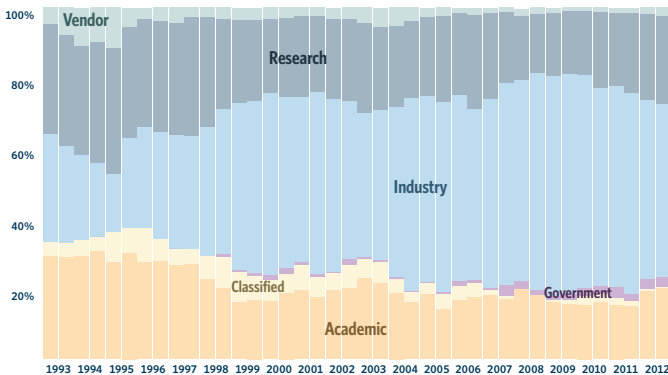
ARCHITECTURES



CHIP TECHNOLOGY



INSTALLATION TYPE



ACCELERATORS/CO-PROCESSORS

